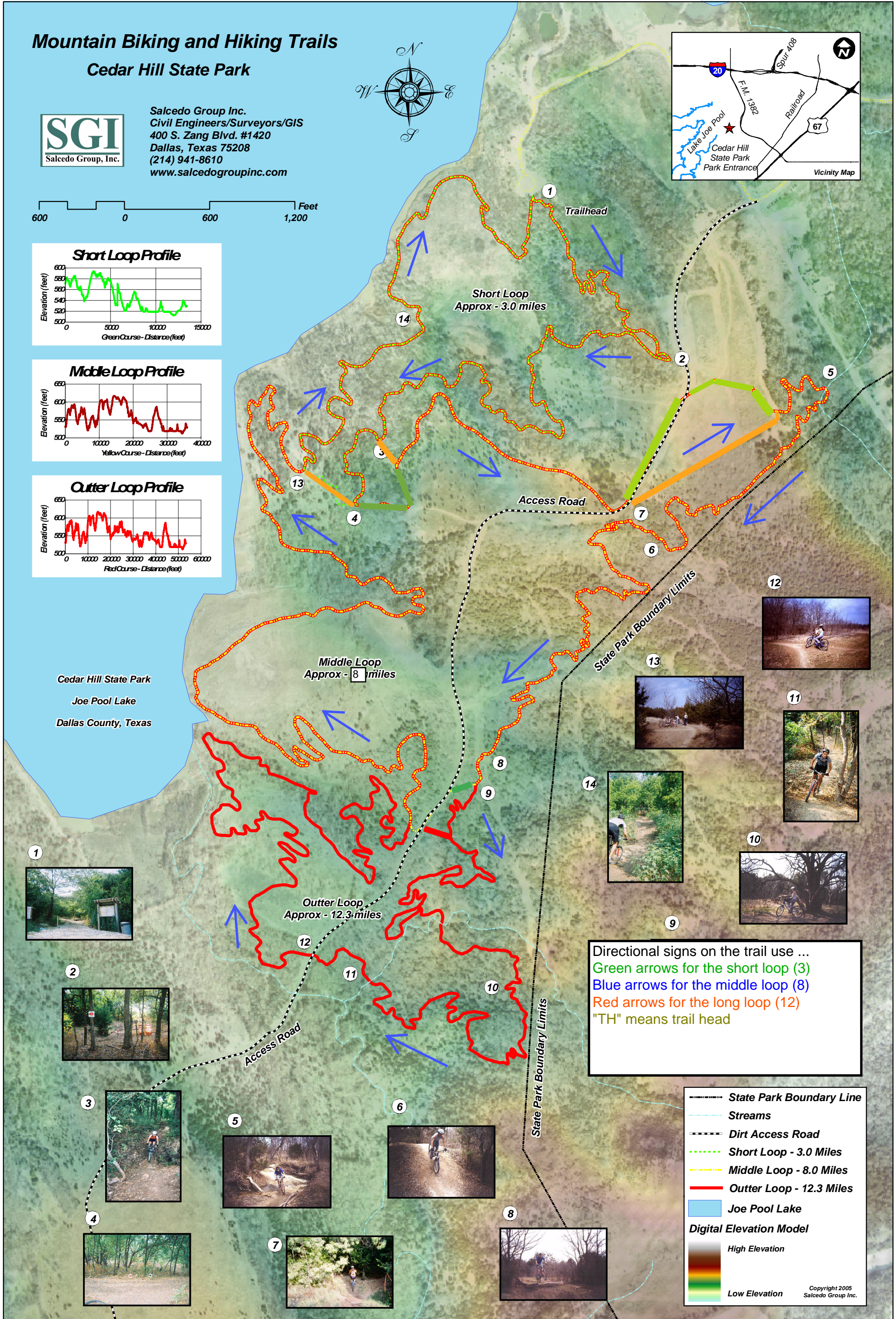
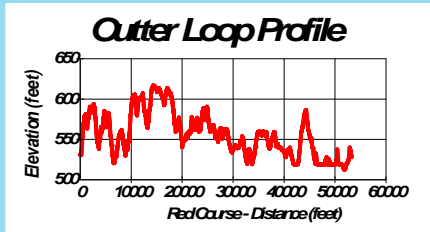
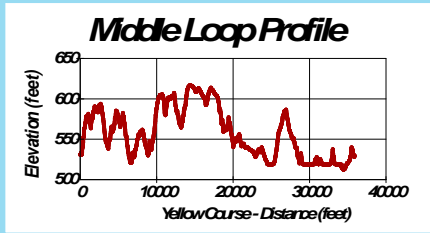
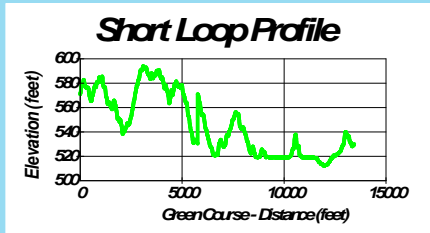
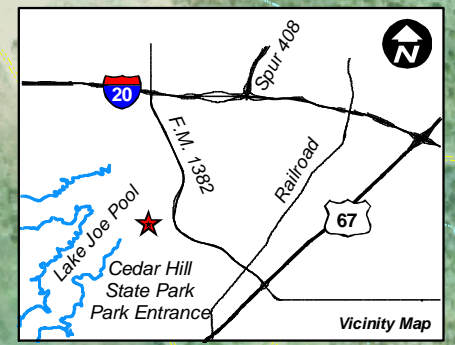
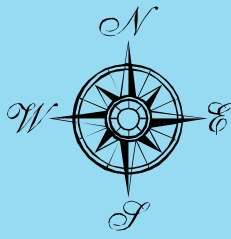


Mountain Biking and Hiking Trails

Cedar Hill State Park



Salcedo Group Inc.
Civil Engineers/Surveyors/GIS
400 S. Zang Blvd. #1420
Dallas, Texas 75208
(214) 941-8610
www.salcedogroupinc.com



Directional signs on the trail use ...
Green arrows for the short loop (3)
Blue arrows for the middle loop (8)
Red arrows for the long loop (12)
"TH" means trail head

State Park Boundary Line
Streams
Dirt Access Road
Short Loop - 3.0 Miles
Middle Loop - 8.0 Miles
Outer Loop - 12.3 Miles
Joe Pool Lake
Digital Elevation Model
 High Elevation
 Low Elevation

Copyright 2005
Salcedo Group Inc.